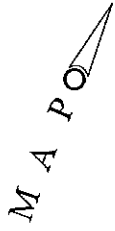
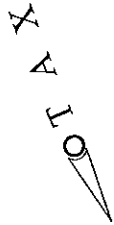


A S S E S S M E N T



OF THE



BOROUGH OF WENONAH

GLOUCESTER COUNTY, NEW JERSEY

2017

ADAMS, REHMANN & HEGGAN

PROFESSIONAL ENGINEERS, LAND SURVEYOR & PLANNERS

(609) 561-0482 p (609) 567-8909 f

850 SO. WHITE HORSE PIKE

HAMMONTON, NEW JERSEY 08037

BLOCK & STREET INDEX

DATE	BY	REVISIONS	BLOCK	SHEET

BLOCK	SHEET	BLOCK	SHEET
1	001	51	004
2	001	52	004
3	001	53	004
4	001	54	004
5	001	55	004
6	001	56	004
7	001	57	004
8	001	58	004
9	001	59	004
10	001	60	004
11	001	61	004
12	001	62	004
13	001	63	004
14	002	64	005
15	002	65	005
16	002	66	005
17	002	67	005
18	002	68	005
19	002	69	005
20	002	70	005
21	003	71	007
22	003	72	007
23	003	73	007
24	003	74	007
25	003	75	007
26	003	76	007
27	003	77	007
28	003	78	007
29	003	79	008
30	003	80	008
31	003	81	008
32	003	82	008
33	003	83	008
34	003	84	008
35	003	85	008
36	003	86	008
37	003	87	008
38	004	88	008
39	004	89	008
40	004	90	008
41	004	91	008
42	004	92	008
43	004	93	008
44	004	94	008
45	004	95	008
46	004	96	008
47	004	97	008
48	004	98	008
49	004	99	008
50	004	100	008

ROAD NAME	BLOCK	SHEET	ROAD NAME	BLOCK	SHEET
ALEXANDER DR	005	001	N EAST AVE	001	001
BANKSBRIDGE RD	008	001	N EAST AVE	002	001
BUTTOWNWOOD ST	003	003	N EAST AVE	003	001
CHERRY & CLINTON AVE	007	004	N GARDEN AVE	004	001
CLINTON & WILLOW STS	005	004	N JACKSON AVE	005	001
E BIRCH ST	001	004	N JEFFERSON AVE	006	001
E BUTTOWNWOOD AVE	001	004	N LINCOLN AVE	007	001
E BUTTOWNWOOD ST	002	004	N MAPLE AVE	008	001
E BUTTOWNWOOD STREET	003	004	N MARION AVE	009	001
E CLARE AVE	007	004	N MARION AVE	010	001
E CHERRY ST	005	004	N MONROE AVE	011	001
E ELM ST	003	004	N MONROE AVE	012	001
E ELMA STREET	003	004	N WILLOW ST	013	001
E MANTUA AVE	005	004	N WILLOW ST	014	001
E MARBLE AVE	001	004	N WILLOW ST	015	001
E MAPLE AVE	004	004	N WILLOW ST	016	001
E PINE ST	002	004	N WILLOW ST	017	001
E PINE ST	001	004	N WILLOW ST	018	001
E PINE ST	002	004	N WILLOW ST	019	001
E PINE ST	003	004	N WILLOW ST	020	001
E PINE ST	004	004	N WILLOW ST	021	001
E PINE ST	005	004	N WILLOW ST	022	001
E PINE ST	006	004	N WILLOW ST	023	001
E PINE ST	007	004	N WILLOW ST	024	001
E PINE ST	008	004	N WILLOW ST	025	001
E PINE ST	009	004	N WILLOW ST	026	001
E PINE ST	010	004	N WILLOW ST	027	001
E PINE ST	011	004	N WILLOW ST	028	001
E PINE ST	012	004	N WILLOW ST	029	001
E PINE ST	013	004	N WILLOW ST	030	001
E PINE ST	014	004	N WILLOW ST	031	001
E PINE ST	015	004	N WILLOW ST	032	001
E PINE ST	016	004	N WILLOW ST	033	001
E PINE ST	017	004	N WILLOW ST	034	001
E PINE ST	018	004	N WILLOW ST	035	001
E PINE ST	019	004	N WILLOW ST	036	001
E PINE ST	020	004	N WILLOW ST	037	001
E PINE ST	021	004	N WILLOW ST	038	001
E PINE ST	022	004	N WILLOW ST	039	001
E PINE ST	023	004	N WILLOW ST	040	001
E PINE ST	024	004	N WILLOW ST	041	001
E PINE ST	025	004	N WILLOW ST	042	001
E PINE ST	026	004	N WILLOW ST	043	001
E PINE ST	027	004	N WILLOW ST	044	001
E PINE ST	028	004	N WILLOW ST	045	001
E PINE ST	029	004	N WILLOW ST	046	001
E PINE ST	030	004	N WILLOW ST	047	001
E PINE ST	031	004	N WILLOW ST	048	001
E PINE ST	032	004	N WILLOW ST	049	001
E PINE ST	033	004	N WILLOW ST	050	001
E PINE ST	034	004	N WILLOW ST	051	001
E PINE ST	035	004	N WILLOW ST	052	001
E PINE ST	036	004	N WILLOW ST	053	001
E PINE ST	037	004	N WILLOW ST	054	001
E PINE ST	038	004	N WILLOW ST	055	001
E PINE ST	039	004	N WILLOW ST	056	001
E PINE ST	040	004	N WILLOW ST	057	001
E PINE ST	041	004	N WILLOW ST	058	001
E PINE ST	042	004	N WILLOW ST	059	001
E PINE ST	043	004	N WILLOW ST	060	001
E PINE ST	044	004	N WILLOW ST	061	001
E PINE ST	045	004	N WILLOW ST	062	001
E PINE ST	046	004	N WILLOW ST	063	001
E PINE ST	047	004	N WILLOW ST	064	001
E PINE ST	048	004	N WILLOW ST	065	001
E PINE ST	049	004	N WILLOW ST	066	001
E PINE ST	050	004	N WILLOW ST	067	001
E PINE ST	051	004	N WILLOW ST	068	001
E PINE ST	052	004	N WILLOW ST	069	001
E PINE ST	053	004	N WILLOW ST	070	001
E PINE ST	054	004	N WILLOW ST	071	001
E PINE ST	055	004	N WILLOW ST	072	001
E PINE ST	056	004	N WILLOW ST	073	001
E PINE ST	057	004	N WILLOW ST	074	001
E PINE ST	058	004	N WILLOW ST	075	001
E PINE ST	059	004	N WILLOW ST	076	001
E PINE ST	060	004	N WILLOW ST	077	001
E PINE ST	061	004	N WILLOW ST	078	001
E PINE ST	062	004	N WILLOW ST	079	001
E PINE ST	063	004	N WILLOW ST	080	001
E PINE ST	064	004	N WILLOW ST	081	001
E PINE ST	065	004	N WILLOW ST	082	001
E PINE ST	066	004	N WILLOW ST	083	001
E PINE ST	067	004	N WILLOW ST	084	001
E PINE ST	068	004	N WILLOW ST	085	001
E PINE ST	069	004	N WILLOW ST	086	001
E PINE ST	070	004	N WILLOW ST	087	001
E PINE ST	071	004	N WILLOW ST	088	001
E PINE ST	072	004	N WILLOW ST	089	001
E PINE ST	073	004	N WILLOW ST	090	001
E PINE ST	074	004	N WILLOW ST	091	001
E PINE ST	075	004	N WILLOW ST	092	001
E PINE ST	076	004	N WILLOW ST	093	001
E PINE ST	077	004	N WILLOW ST	094	001
E PINE ST	078	004	N WILLOW ST	095	001
E PINE ST	079	004	N WILLOW ST	096	001
E PINE ST	080	004	N WILLOW ST	097	001
E PINE ST	081	004	N WILLOW ST	098	001
E PINE ST	082	004	N WILLOW ST	099	001
E PINE ST	083	004	N WILLOW ST	100	001

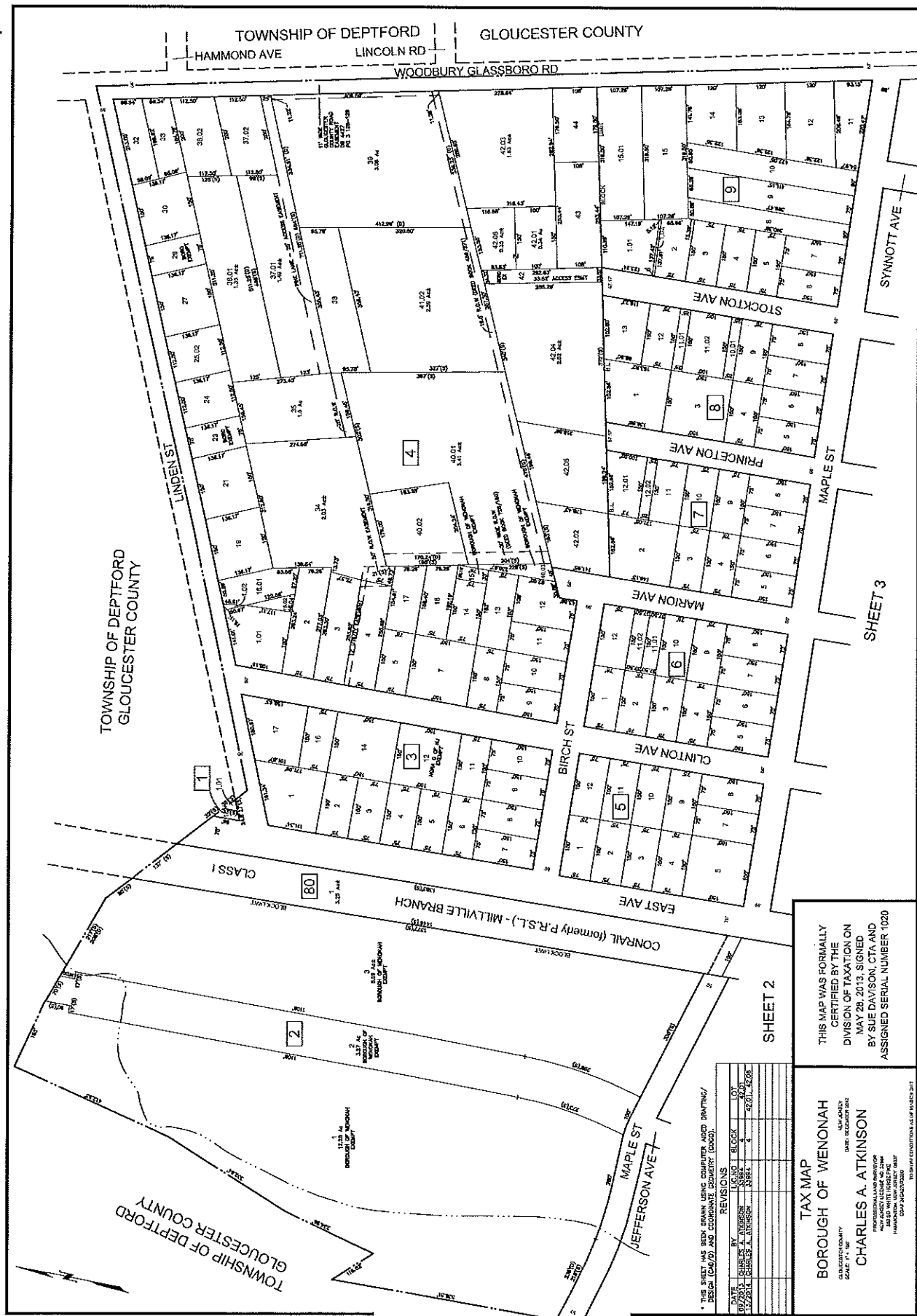
ROAD NAME	BLOCK	SHEET
STOCKTON AVE	001	001
SPRING ST	001	001
W BUTTOWNWOOD ST	002	001
W CEDAR AVE	003	001
W CEDAR ST	004	001
W CHERRY AVE	005	001
W CHERRY ST	006	001
W ELVA ST	007	001
W ELVA ST	008	001
W ELVA ST	009	001
W ELVA ST	010	001
W ELVA ST	011	001
W ELVA ST	012	001
W ELVA ST	013	001
W ELVA ST	014	001
W ELVA ST	015	001
W ELVA ST	016	001
W ELVA ST	017	001
W ELVA ST	018	001
W ELVA ST	019	001
W ELVA ST	020	001
W ELVA ST	021	001
W ELVA ST	022	001
W ELVA ST	023	001
W ELVA ST	024	001
W ELVA ST	025	001
W ELVA ST	026	001
W ELVA ST	027	001
W ELVA ST	028	001
W ELVA ST	029	001
W ELVA ST	030	001
W ELVA ST	031	001
W ELVA ST	032	001
W ELVA ST	033	001
W ELVA ST	034	001
W ELVA ST	035	001
W ELVA ST	036	001
W ELVA ST	037	001
W ELVA ST	038	001
W ELVA ST	039	001
W ELVA ST	040	001
W ELVA ST	041	001
W ELVA ST	042	001
W ELVA ST	043	001
W ELVA ST	044	001
W ELVA ST	045	001
W ELVA ST	046	001
W ELVA ST	047	001
W ELVA ST	048	001
W ELVA ST	049	001
W ELVA ST	050	001

TAX MAP
BOROUGH OF WENONAH
MUNICIPALITY
DATE REVISION: 01/11

CHARLES A. ATKINSON
LICENSED LAND SURVEYOR
NEW JERSEY STATE BOARD OF SURVEYING AND MAPPING
1000 WASHINGTON AVENUE, SUITE 200
SPRINGFIELD, NJ 07081-1000
TEL: 908-988-1100
FAX: 908-988-1101
WWW.CHARLESATKINSON.COM

BLOCK & STREET INDEX

* THIS SHEET HAS BEEN DRAWN USING COMPUTER AIDED DRAFTING/DESIGN (CAD/B) AND COORDINATE GEOMETRY (COG).



SHEET 2

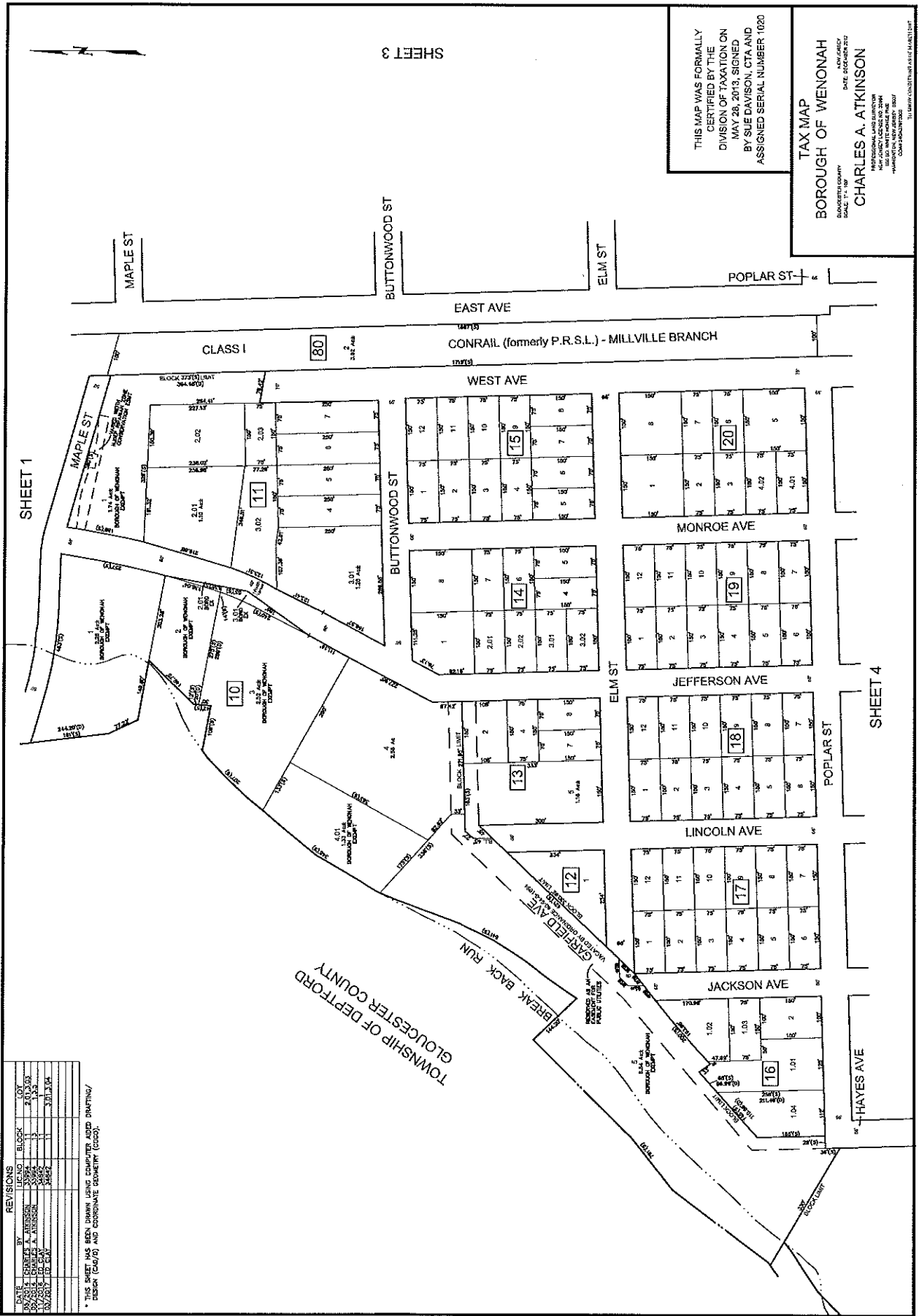
SHEET 3

* THIS SHEET HAS BEEN DRAWN USING COMPUTER AIDED DRAFTING/DESIGN (CAD/D) AND GEOREFERENCE EVIDENCE (GDE).

DATE	BY	REVISIONS
09/20/13	CHARLES A. ATKINSON	ISSUED TO USER
11/22/14	CHARLES A. ATKINSON	REVISED
11/22/14	CHARLES A. ATKINSON	REVISED

THIS MAP WAS FORMALLY CERTIFIED BY THE DIVISION OF TAXATION ON MAY 28, 2013, SIGNED BY SUE DAVISON, CTA AND ASSIGNED SERIAL NUMBER 1020

TAX MAP
BOROUGH OF WENONAH
 DATE RECORDED
CHARLES A. ATKINSON
 MAP LAYOUT AND DESIGN
 11/22/14
 11/22/14
 11/22/14



REVISIONS

DATE	BY	REASON	BLOCK	LOT
08/27/14	CHARLES A. ATKINSON	ADDED	10	1
09/25/14	CHARLES A. ATKINSON	ADDED	10	2
10/27/15	ERIC CAY	ADDED	10	3
10/27/15	ERIC CAY	ADDED	10	4
10/27/15	ERIC CAY	ADDED	10	5
10/27/15	ERIC CAY	ADDED	10	6
10/27/15	ERIC CAY	ADDED	10	7
10/27/15	ERIC CAY	ADDED	10	8
10/27/15	ERIC CAY	ADDED	10	9
10/27/15	ERIC CAY	ADDED	10	10
10/27/15	ERIC CAY	ADDED	10	11
10/27/15	ERIC CAY	ADDED	10	12
10/27/15	ERIC CAY	ADDED	10	13
10/27/15	ERIC CAY	ADDED	10	14
10/27/15	ERIC CAY	ADDED	10	15
10/27/15	ERIC CAY	ADDED	10	16
10/27/15	ERIC CAY	ADDED	10	17
10/27/15	ERIC CAY	ADDED	10	18
10/27/15	ERIC CAY	ADDED	10	19
10/27/15	ERIC CAY	ADDED	10	20

* THIS MAP HAS BEEN DRAWN USING THE LATEST AVAILABLE DATA FROM THE TOWNSHIP OF DEPTFORD, GLOUCESTER COUNTY, NEW JERSEY.

THIS MAP WAS FORMALLY CERTIFIED BY THE DIVISION OF TAXATION ON MAY 28, 2013, SIGNED BY SUE DAVIDSON, CTA AND ASSIGNED SERIAL NUMBER 1020

TAX MAP
BOROUGH OF WENONAH
SUNDERLAND COUNTY
STATE OF NEW JERSEY
DATE: 08/27/2015
CHARLES A. ATKINSON
PROFESSIONAL LAND SURVEYOR
NO. 15-00000000000000000000
EXPIRES: 08/27/2018
TOWNSHIP OF DEPTFORD, GLOUCESTER COUNTY, NEW JERSEY

DATE	BY	REVISIONS	LIC. NO.	BLOCK	LOT
12/21/11	CHARLES A. ATKINSON		3394	34	6

* THIS SHEET HAS BEEN DRAWN USING COMPUTER AIDED DRAFTING/
DESIGN (CAD) AND COORDINATE GEOMETRY (CGO).

TOWNSHIP OF DEPTFORD
GLOUCESTER COUNTY



SHEET 1

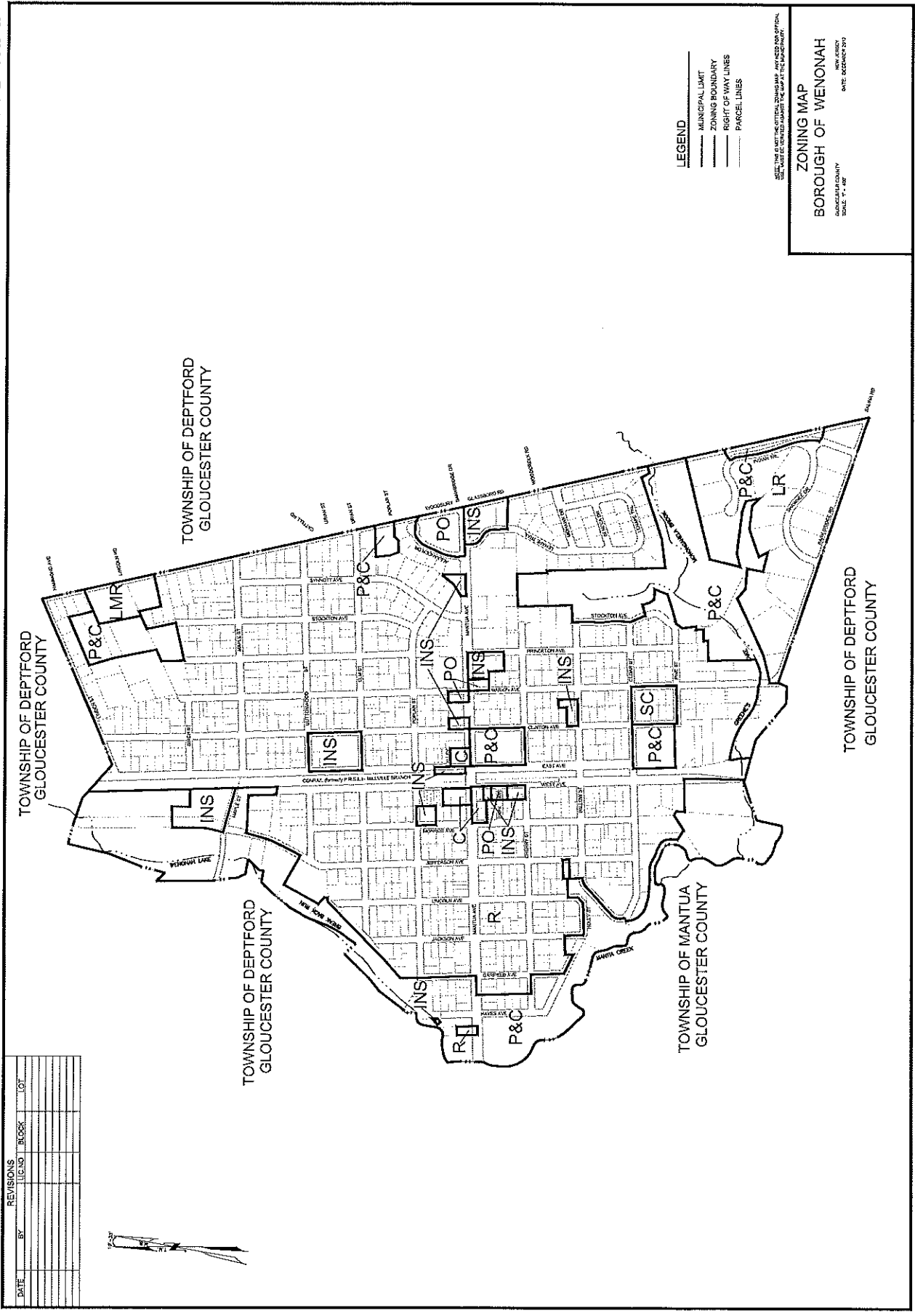
SHEET 5

SHEET 2

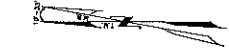
TAX MAP
BOROUGH OF WENONAH
GLOUCESTER COUNTY
DATE: 05/28/2013
DRAWN BY: CHARLES A. ATKINSON
PROFESSIONAL LAND SURVEYOR
NO. 303 WHITE HORSE ROAD
HARRINGTON, NJ 08041
CERT. # 120720000

THIS MAP WAS FORMALLY
CERTIFIED BY THE
DIVISION OF TAXATION ON
MAY 28, 2013, SIGNED
BY SUE DAVISON, CTA AND
ASSIGNED SERIAL NUMBER 1020

ZONING MAP



REVISIONS			
DATE	BY	REVISION	LOT

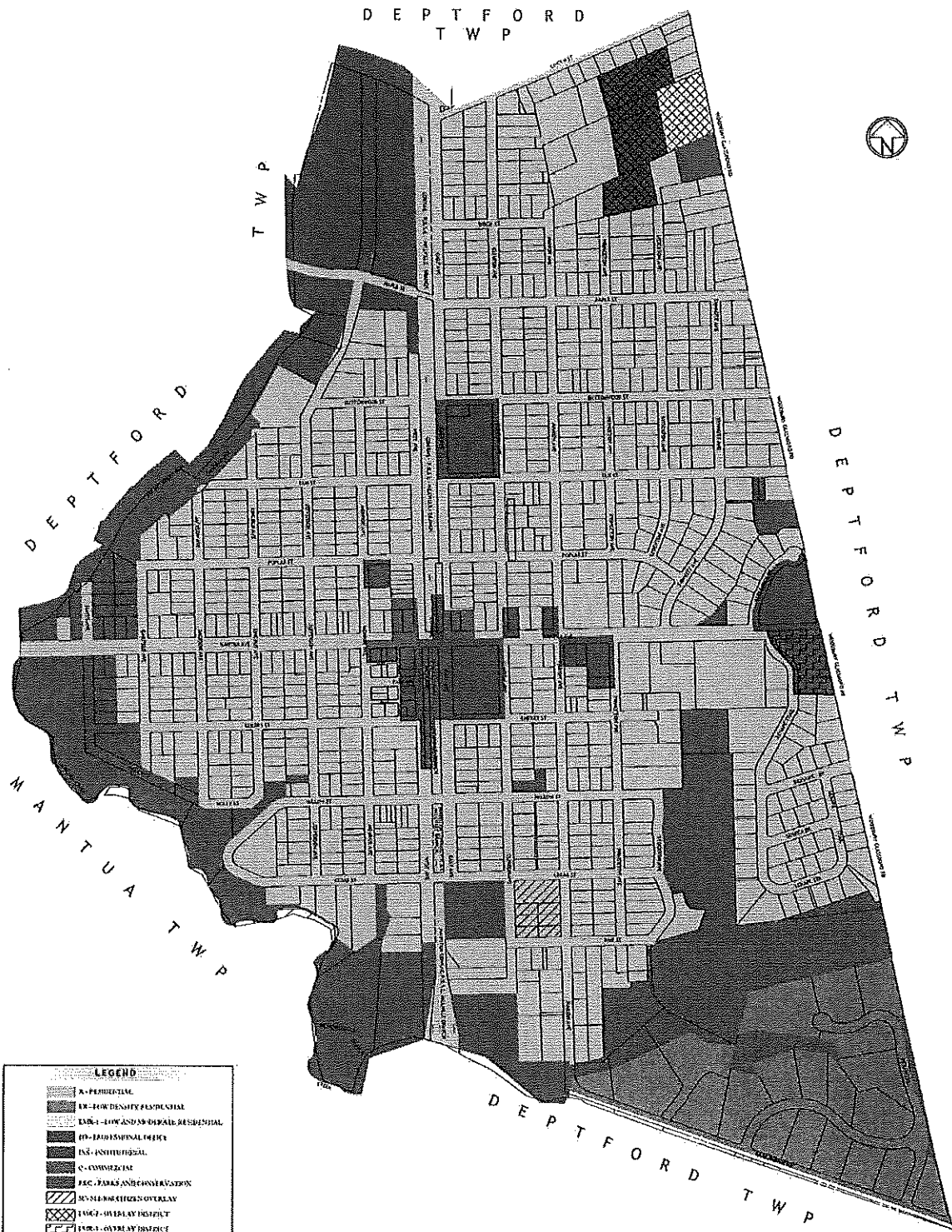


LEGEND
 _____ MUNICIPAL LIMIT
 _____ ZONING BOUNDARY
 _____ RIGHT-OF-WAY LINES
 _____ PARCEL LINES

ZONING MAP
BOROUGH OF WENONAH
 GLoucester COUNTY
 NEW JERSEY
 DATE: JUNE 2019
 SCALE: 1" = 400'

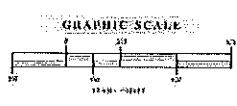
ZONING MAP

DEPTFORD
TWP



LEGEND

- R-1 - RESIDENTIAL
- ER - LOW DENSITY RESIDENTIAL
- EAR-1 - LOW DENSITY RESIDENTIAL
- RD - RESIDENTIAL OFFICE
- INS - INSTITUTIONAL
- C - COMMERCIAL
- P&C - PARKS AND RECREATION
- S - SPECIAL USE OVERLAY
- UO-1 - OVERLAY DISTRICT
- UO-2 - OVERLAY DISTRICT




THE PETTIT GROUP, LLC
 Engineering • Architecture • Planning
 497 Center Street • Sewell, NJ 08080
 Tel: 856-464-9696 Fax: 856-464-9696
 www.thepettitgroup.com
 Certificate of Registration No. 360A29131 PA

Drawn by: M. Broughton
 Checked by: B. Broughton
 Date: 10/1/10
 Project No.: 10-0004
 File No.: 10-0004-01
 Date: 10/1/10

ZONING MAP
 BOROUGH OF
 WENONAH
 HUNTERDON COUNTY
 NEW JERSEY

D. Kreck
DAVID P. KRECK, P.E., C.S.P.
 Professional Engineer
 State of New Jersey - License # GE 29995

NO.	REVISION	DATE	BY
1	ISSUED FOR REVIEW	10/1/10	DK
2	ISSUED FOR REVIEW	10/1/10	DK
3	ISSUED FOR REVIEW	10/1/10	DK
4	ISSUED FOR REVIEW	10/1/10	DK
5	ISSUED FOR REVIEW	10/1/10	DK
6	ISSUED FOR REVIEW	10/1/10	DK
7	ISSUED FOR REVIEW	10/1/10	DK
8	ISSUED FOR REVIEW	10/1/10	DK
9	ISSUED FOR REVIEW	10/1/10	DK
10	ISSUED FOR REVIEW	10/1/10	DK